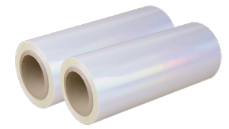


luxefilm RAINBOW HOLOGRAFIK™

SPECIALTY THERMAL OVERLAMINATE FILM



LuxeFilm Rainbow Holografik a 1.6 mil overlamine film by Nobelus, is a clear, PET thermal product that has been micro-embossed with tiny grooves that cause a pattern of light diffraction. Normal white light is reflected off the surface into stunning spectral color from different positions and angles. The result draws attention and highlights design and graphic elements.

KEY BENEFITS

- A completely seamless repeat pattern
- Pattern will not rub off like a cast and cure finish due to embedded holographic technology
- Adheres to most substrates
- Can layer over select LuxeFilms laminates such as Mirror Metalized or Gilt Metalized
- Total Satisfaction Gold Seal Guarantee™

POST-LAMINATE PERFORMANCE*

- Die-Cutting
- Folding
- Glueable
- Stampable
- Emboss-Friendly
- Offset Printable, UV and Screen

COMMON APPLICATIONS

- Corporate Collateral
- Pocket Folders
- Promotional Pieces
- Point of Sale Promotional
- Security Applications
- Collectable Cards
- Board Games
- Soft and Hardbound Book Covers
- Photo Books
- Ring Binder and Media/binders and Cases
- High Use Folding Carton Packaging
- Electronics Packaging
- Consumer Goods Packaging
- Secondary Cosmetic Packaging
- Liquor and Luxury Product Packaging
- Gift Packaging
- Jewelry Packaging
- Rigid Boxes
- Flexible Packaging
- Labels

| Properties | Side | Value | Units | Test Method / Standard |
|----------------------------------|------|-----------------|--------------------|---------------------------------|
| Thickness | | 1.6 | Mil | DIN EN ISO 534 |
| | | 39 | Microns | |
| Gloss | | 168 | % | ASTM D 2457 |
| Haze | | 1.2 | % | ASTM D1003 |
| Light Transmission | | 89.7 | % | ASTM D1003 |
| Dyne Level | PET | 42 | Dyne | DIN 55660-2 |
| Moisture Vapor Transmission Rate | | N/A | N/A | N/A |
| Oxygen Transmission Rate | | N/A | N/A | N/A |
| Application Temperature | | 185-205 (85-95) | °F (°C) | Various Equipment - Always Test |
| Lamination Tensile Strength | MD | 22.7 | kg/cm ² | ASTM D882 |
| | TD | 20.9 | kg/cm ² | |

MD = Machine Direction TD = Transverse Direction

Note: The information given on this specification sheet is believed to be true and accurate and is not intended to violate any statutory condition or right of a third party. Nobelus makes no warranty, express or implied, as to the fitness of the products for any specific use or purpose. The above data is purely for reader's consideration, investigation and verification.

* Testing recommended for all post-lamine finishing.

nobelus[®]
CONSIDER IT FINISHED

Enhancing People, Partners
and the World's Brands

OCTOBER 2020