

RAINBOW HOLOGRAFIK™ METALIZED

SPECIALTY THERMAL PRINTABLE LAMINATE FILM

LuxeFilms® Rainbow Holografik™ Metalized printable metalized laminate film features a smooth, subtle rainbow embossed pattern. The effect is an engaging visual display of light and color that provides a striking visual impact, and is ideal for surface printing to enhance your high-end graphics. **Rainbow Holografik™ Metalized** boasts a 40" seamless pattern allowing for full press sheet use so the eye cannot detect where the pattern repeats.

Rainbow Holografik™ Metalized adheres to most substrates while performing beautifully in post press applications such as die-cutting, folding, gluing, stamping and spot UV finishes. **Rainbow Holografik™ Metalized** stellar performance makes it an excellent finish for folding cartons, labels, book covers and POP displays.

KEY BENEFITS

- Accepts UV Offset Printing
- Can Combine with Many LuxeFilms® Laminate Films
- Emboss-Friendly
- Glueable and Stampable
- Total Satisfaction Gold Seal Guarantee™

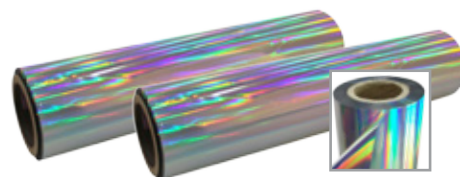
SUGGESTED USES

- Point of Sale Displays
- Book Covers
- Slip Cases
- Premium folding Cartons
- Gift Packaging
- Consumer Goods Packaging
- Cosmetic and Jewelry Packaging
- Electronics Packaging
- Liquor and Luxury Product Packaging

Properties	Side	Value	Units	Test Method / Standard
Thickness		1.6	Mil	ASTM D2103
		39	Microns	
Gloss	45°	168	GU	ASTM D2457
Haze		26.9	%	ASTM D882
Light Transmission		1.94	%	ASTM D882
Dyne Level		44	Dyne	ASTM D2578
Application Temperature		190-210°F (95-100°C)	°F (°C)	Various Equipment- Always Test
Lamination Tensile Strength	MD	22.7	kg/cm ²	ASTM D882
	TD	20.9	kg/cm ²	

A = Adhesive Side B = BOPP Side MD = Main Direction TD = Transverse Direction

Note: The information given on this specification sheet is believed to be true and accurate and is not intended to violate any statutory condition or right of a third party. Nobelus™ makes no warranty, express or implied, as to the fitness of the products for any specific use or purpose. The above data is purely for reader's consideration, investigation and verification.



Enhancing People, Partners
and the World's Brands